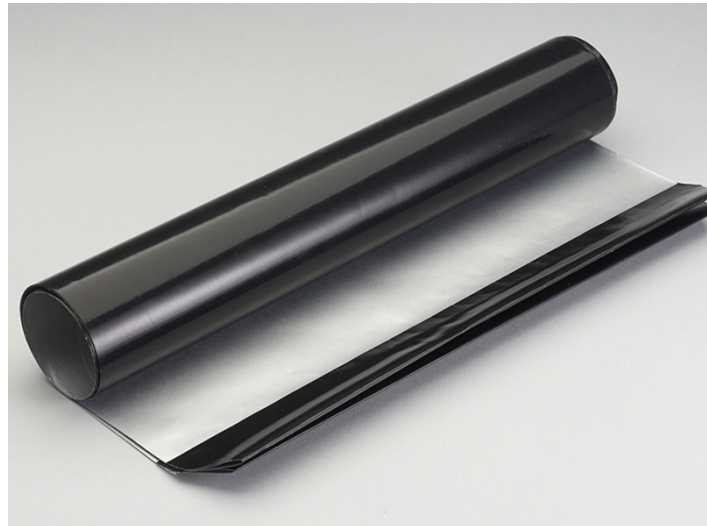


Contact Us Today: Toll Free: [866-721-5881](tel:866-721-5881) | Local: [330-516-6095](tel:330-516-6095) | info@essentialware.com



**PTFE NON-STICK RELEASE SHEET
WITH BRACKET LOOPS | TAYLOR
CLAMSHELL MODEL 15-23 | 8
SHEETS**

SKU: SB191713-8

Categories: [Commercial Food Service](#), [PTFE Release Sheets for Clamshell Grills and Broilers](#), [PTFE Sheets](#)

PRODUCT DESCRIPTION

PTFE NON-STICK RELEASE SHEET WITH BRACKET LOOPS | TAYLOR CLAMSHELL MODEL 15-23 | 8 SHEETS

Non-stick release sheets are important to the operation of your Taylor clam shell grill and the flow of your kitchen operation. Essentialware Triple-Coated non-stick fluoropolymer coating ensures a release sheet that keeps your clam shell grill operational longer.

Both sides of these silver/black sheets are usable. To extend the life of this product, flip regularly.

PTFE Release sheets for Taylor Clamshell Model 15-23. Essentialware PTFE sheets are produced to meet or exceed OEM release sheet performance at a fraction of the OEM cost.

PTFE NON-STICK RELEASE SHEET FEATURES & BENEFITS:

- FDA approved food safe.
- Recommended max temp is 550° F — Do not expose to direct flame.
- Reusable hundreds of times

Need a Customized Solution? We can help.

[Contact Us](#)

Contact Us Today: Toll Free: [866-721-5881](tel:866-721-5881) | Local: [330-516-6095](tel:330-516-6095) | info@essentialware.com

- Easy to clean with warm soapy water.

ADDITIONAL INFORMATION

Weight	1.8 lbs
Dimensions	18 × 3 × 3 in
Manufacturer	Taylor
Model	C810, C812, C820, C822
Size	19" x 17" Looped
Color	Black/Silver
Quantity	8 sheet pack
Type	Sheets
Thickness	4.3 mil

Need a Customized Solution? We can help.

[Contact Us](#)