



**PTFE NON-STICK WITH BRACKET  
LOOPS | TAYLOR QS11, 12 (TOP) | 10  
SHEETS**

**\$124.00**

BJ11TLT-10

Taylor QS 11/12 /24 Release Sheet

w/bracket loops

Size 21.5" x 18.125"

(10 sheet pack)

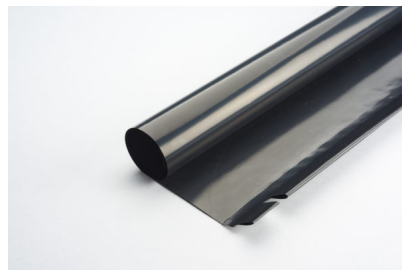
---

**SKU:** BJ11TLT-10

**Categories:** [Commercial Food Service](#), [PTFE Release Sheets for Clamshell Grills and Broilers](#), [PTFE Sheets](#)

**Tags:** [78804](#), [BJ11TLT-10](#), [Commercial Food Service](#), [PTFE non-stick release sheets](#), [PTFE Release Sheets for Clamshell Grills and Broilers](#), [PTFE sheets](#), [Taylor Grill Sheet](#), [Teflon release sheets](#)

**GALLERY IMAGES**



bjht18

## **PRODUCT DESCRIPTION**

### **PTFE NON-STICK WITH BRACKET LOOPS | TAYLOR QS11, 12 (TOP) | 10 SHEETS**

Non-stick release sheets are important to the operation of your Taylor high-speed clam shell grill and the flow of your kitchen operation. Essentialware Triple-Coated non-stick flouropolymer coating ensures a release sheet that keeps your clam shell grill operational longer.

Both sides of these black sheets are usable. To extend the life of this product, flip regularly.

PTFE Release sheets for Taylor QS11 and QS12 top platen. Essentialware PTFE sheets are produced to meet or exceed OEM release sheet performance at a fraction of the OEM cost.

#### **PTFE NON-STICK RELEASE SHEET FEATURES & BENEFITS:**

- FDA approved food safe.
- Recommended max temp is 550° F — Do not expose to direct flame.
  - Reusable hundreds of times
- Easy to clean with warm soapy water.

## ADDITIONAL INFORMATION

<b>Weight</b>	1.6 lbs
<b>Dimensions</b>	18 × 3 × 3 in
<b>OEM Equivalent</b>	Taylor QS #78804
<b>Manufacturer</b>	Taylor
<b>Model</b>	QS11, QS12
<b>Size</b>	21.5" x 18.125"
<b>Type</b>	<a href="#">Sheets</a>
<b>Quantity</b>	10 sheet pack
<b>Thickness</b>	4.3 mil
<b>Color</b>	Black